

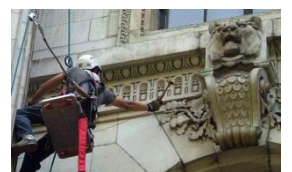
Facade Assessment



- Facade survey and condition assessment
- Laboratory and field durability and performance testing
- Investigation and remediation of uncontrolled rainwater penetration
- Evaluation of thermal performance and condensation potential
- Structural analysis, nonlinear finite element analysis, and repair design
- Cost estimating and capital reserve studies
- Pre-purchase/pre-sale evaluation and condition assessment
- Repair, rehabilitation, and re-clad/over-clad of existing structures

We pioneered the practice of modern facade assessment and repair in the 1970s. Our work investigating landmark facade failures, including New York City's Woolworth Building in 1977 and Chicago's Aon Center in 1988, positioned us as a global leader in the field. Today, our company is recognized as a trusted resource for objective and technically sound facade assessment and repair design on both contemporary and historic structures.

One of the unique core strengths we bring to all our work is the technical depth and expertise available from our materials science group in our Jack R. Janney Technical Center (JTC). Decades of industry-sponsored, leading-edge research and laboratory testing for material durability and performance provides our professionals with the in-house resources necessary to take a holistic approach to problem-solving that is critical to developing comprehensive, cost-effective, and technically sound repair and restoration strategies for building facades of any age, material composition, or construction type. The technical depth of the JTC and hands-on approach to problem-solving that all our company's professionals take in the field are hallmarks of our organization, whether working from scaffolding or engaging the services of the professionally certified WJE Difficult Access Team to reach facade and domed surfaces that others consider impossible to reach.





SERVICE PROFILE

Facade Assessment

REPRESENTATIVE PROJECTS

- 888 O'Farrell Street - San Francisco, CA: Window and EIFS leakage investigation and repair design
- Amoco Building - Chicago, IL: Distressed marble panel investigation and granite re-clad design
- Blackstone Hotel - Chicago, IL: Hands-on evaluation and facade restoration
- Candler Building - Atlanta, GA: Marble and terra cotta facade investigation
- Harold Washington Social Security Center - Chicago, IL: Facade recladding design
- Hotel Palomar (Architects Building) - Philadelphia, PA: Exterior envelope repairs
- Mathematics Tower and Science and Engineering Library - Columbus, OH: Investigation and repair of brick cladding
- Miami-Dade County Courthouse - FL: Assessment and repair design of historic terra cotta facade
- New York Public Library - NY: Investigation and comprehensive exterior restoration
- Philadelphia Savings Fund Society Building - PA: Exterior survey and water leakage testing
- Washington Monument - Washington, D.C.: Facade assessment
- Washington State Legislative Building - Olympia: Exterior restoration and earthquake repair

